

TECHNICAL PACKAGE

Style Name: Roland Alpha

Size Range: XS-XL

Style Number: 27001S25T2

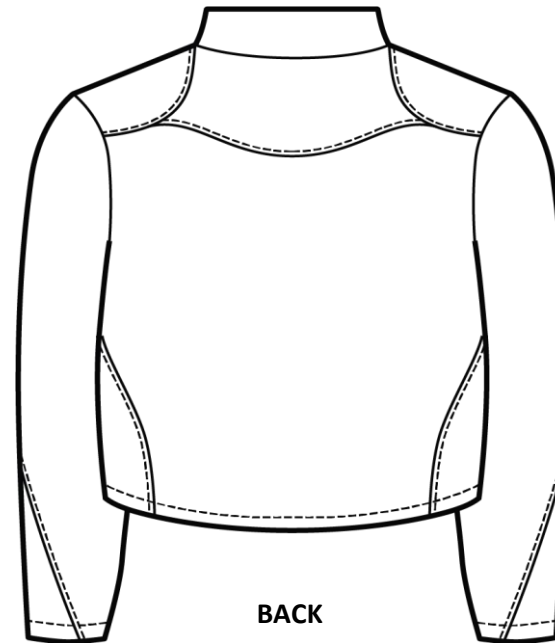
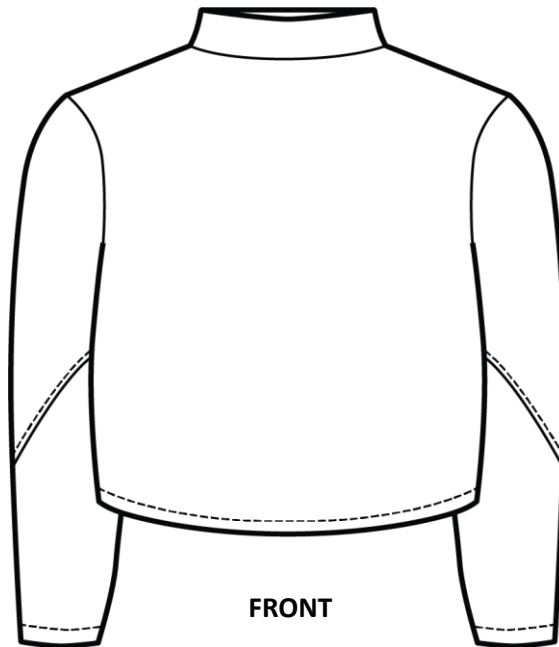
Sample Size: S

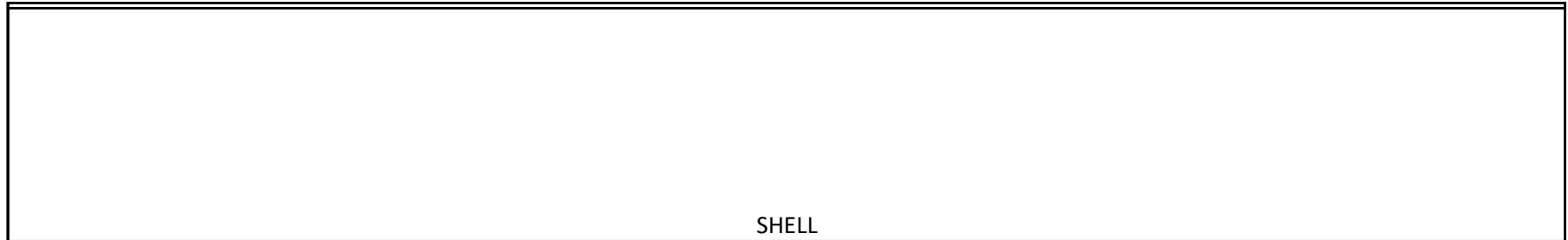
Generated by: Ryan Moll

DESCRIPTION

Unisex fleece pullover with design lines, shifted back shoulder seams, mock neck collar, and cropped fit.

SKETCH - NOT TO SCALE



TECHNICAL PACKAGE**Style Name:** Roland Alpha**Size Range:** XS-XL**Style Number:** 27001S25T2**Sample Size:** S**Generated by:** Ryan Moll**BILL OF MATERIALS****FABRIC SWATCHES****FABRIC**

Category	Type	Content	Width	Yardage	Units	Color
Shell	Polartec Alpha Direct	100% Polyester	59"	1.86 yds	1	Lichen Print
	Knit Fleece					

FINDINGS

Item	Description	Size	Length	Location	Quantity	Color	Total
Label	Brand	1.5" x 2"		CB NK	1	White	1
Label	Country of Origin	3" x 0.75"		CB NK	1	White	1
Threads	Serger	Tex 27		All OVLK	3 Spools	White	3 Spools
	Lockstitch	Tex 24		All SN	1 Spools	Green	1 Spool

Style Name: Roland Alpha
Style Number: 27001S25T2

Sample Size: S

PATTERN PARTS LIST

Sub-Total Shell	6
-----------------	---

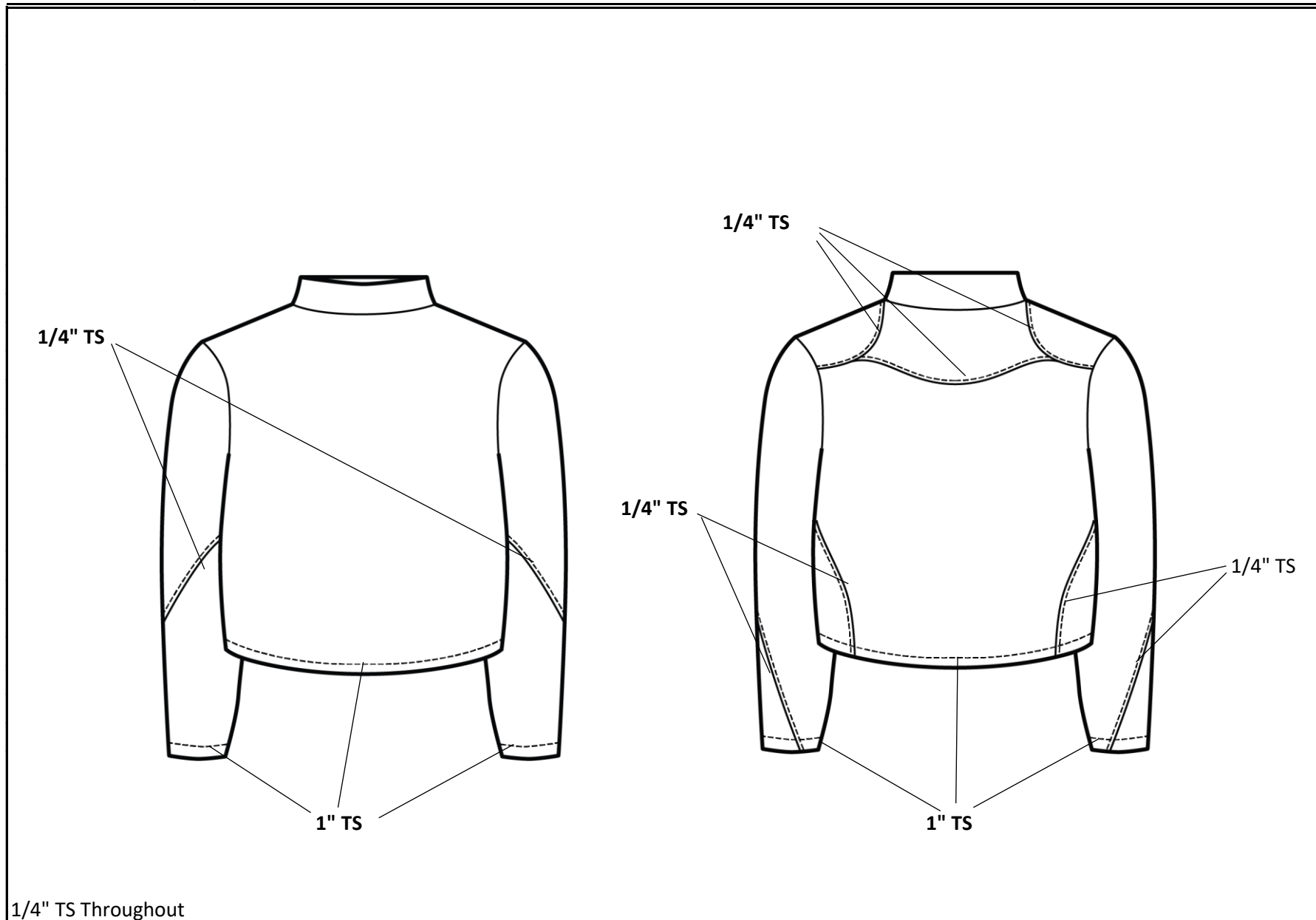
3 of 7

Style Name: Roland Alpha
Style Number: 27001S25T2

TECHNICAL PACKAGE
Size Range: XS-XL
Sample Size: S

Generated by: Ryan Moll

FRONT SKETCH TO 1/8" SCALE - STITCH CALL OUTS AND DETAIL SKETCHES



Generated by: Ryan Moll

MEASUREMENTS (in inches)

[illegible]

SPECIAL INSTRUCTIONS

OVLK all piece edges before sewing

TECHNICAL PACKAGE

Style Name: Roland Alpha

Size Range: XS-XL

Style Number: 27001S25T2

Sample Size: S

Generated by: Ryan Moll

SEAM ALLOWANCES

3/8"	Throughout Unless Noted
2"	Hem, Cuffs

TECHNICAL PACKAGE

Style Name: Roland Alpha

Size Range: XS-XL

Style Number: 27001S25T2

Sample Size: S

Generated by: Ryan Moll

SEQUENCE OF CONSTRUCTION

SHELL

- 1 Join BK to BK Yoke and TS
- 2 Join FRT to BK @ SHLDR & TS
- 3 Set SLV to ARMHL
- 4 Join underarm & SS & TS
- 5 OVLK collar to NK w/ 4 thrd OVLK & set tags @ CB NK
- 6 Finish hem & cuff w/ 1" twice turn

NOTE: *SNL at 8 stitches per inch used throughout unless otherwise specified*
 All OVLK 3 thrd unless otherwise specified
 TS with 1/4" unless otherwise specified