

**TECHNICAL PACKAGE**

**Style Name:** Roland Fleece

**Size Range:** XS-XL

**Style Number:** 27001S25J1

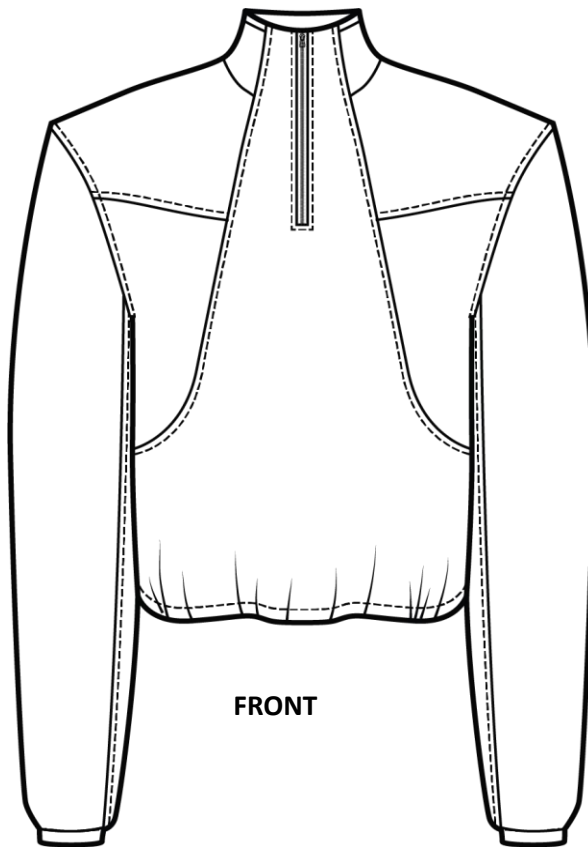
**Sample Size:** M

**Generated by:** Ryan Moll

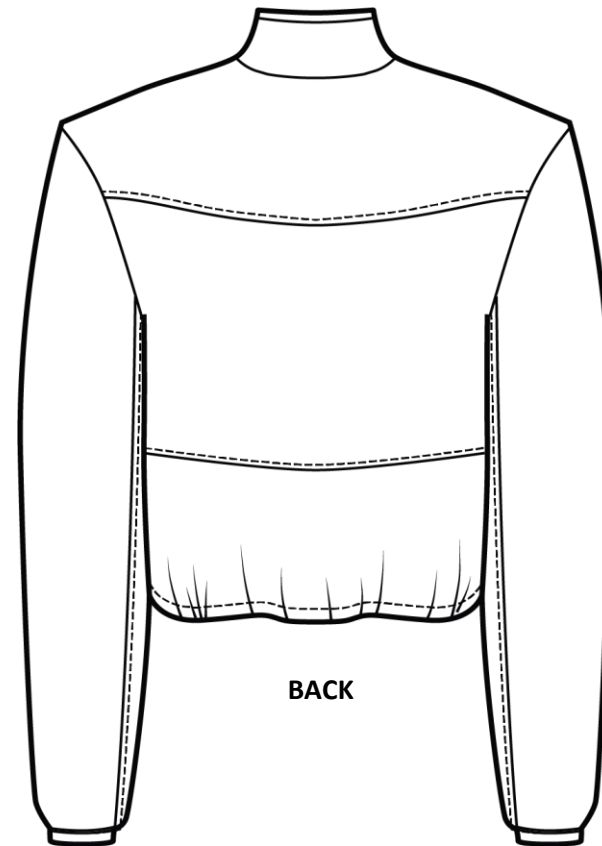
**DESCRIPTION**

Unisex fleece pullover with quarter zip, side seam pockets, elastic waistband, and gusseted underarms with invisible zipper vents.

**SKETCH - NOT TO SCALE**



**FRONT**



**BACK**

**Generated by:** Ryan Moll

**TECHNICAL PACKAGE****Style Name:** Roland Fleece**Size Range:** XS-XL**Style Number:** 27001S25J1**Sample Size:** M**Generated by:** Ryan Moll**PATTERN PARTS LIST**

Piece #	Description	Fabric	Cut #
1	Front Top	Shell A	2
2	Front Mid	Shell A	2
3	Back Top	Shell A	1
4	Back Mid	Shell A	1
5	Upper Sleeve	Shell A	2
6	Front Collar	Shell A	2
7	Back Collar	Shell A	1
Sub-Total Shell A			11
8	Front	Shell B	1
9	Back Bottom	Shell B	1
10	Under Sleeve	Shell B	2
11	Under Sleeve Gusset Front	Shell B	2
12	Under Sleeve Gusset Back	Shell B	2
Sub-Total Shell B			8
13	Front Lining	Lining	1
14	Under Sleeve Gusset Front Lining	Lining	2
15	Under Sleeve Gusset Back Lining	Lining	2
Sub-Total Lining			5
Total Pieces			24

**Style Name:** Roland Fleece  
**Style Number:** 27001S25J1

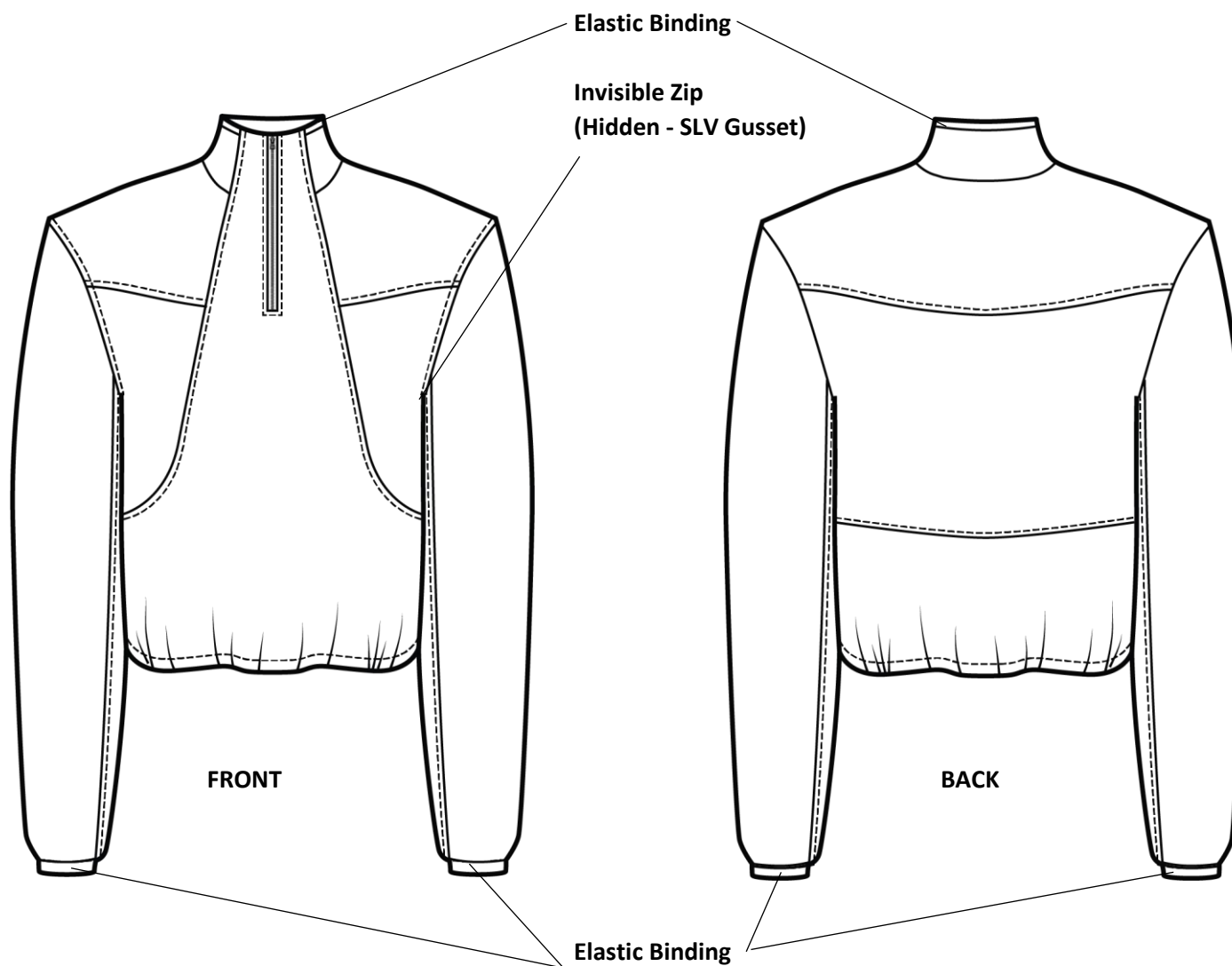
**TECHNICAL PACKAGE**

**Size Range:** XS-XL

**Sample Size:** M

**Generated by:** Ryan Moll

**FRONT SKETCH TO 1/8" SCALE - STITCH CALL OUTS AND DETAIL SKETCHES**



1/4" TS Throughout

TECHNICAL PACKAGE

Size Range: XS-XL

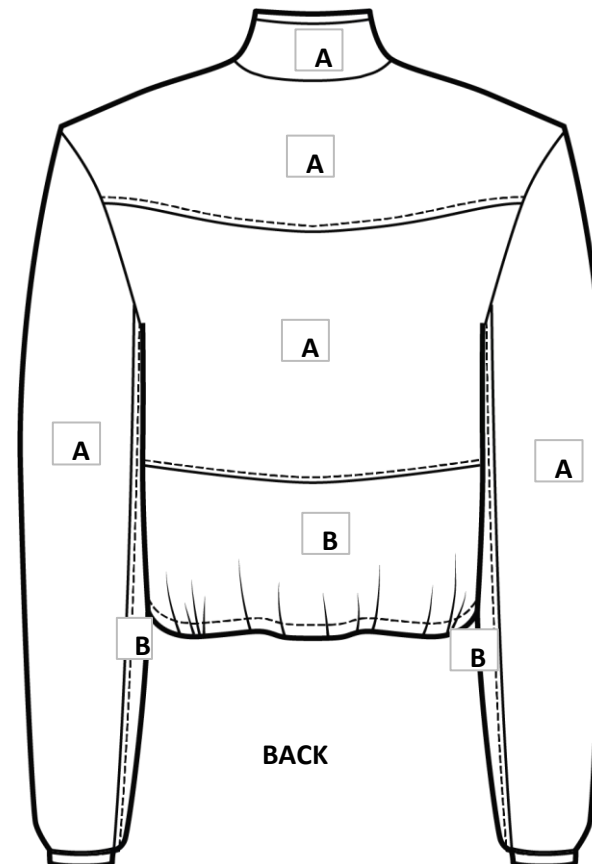
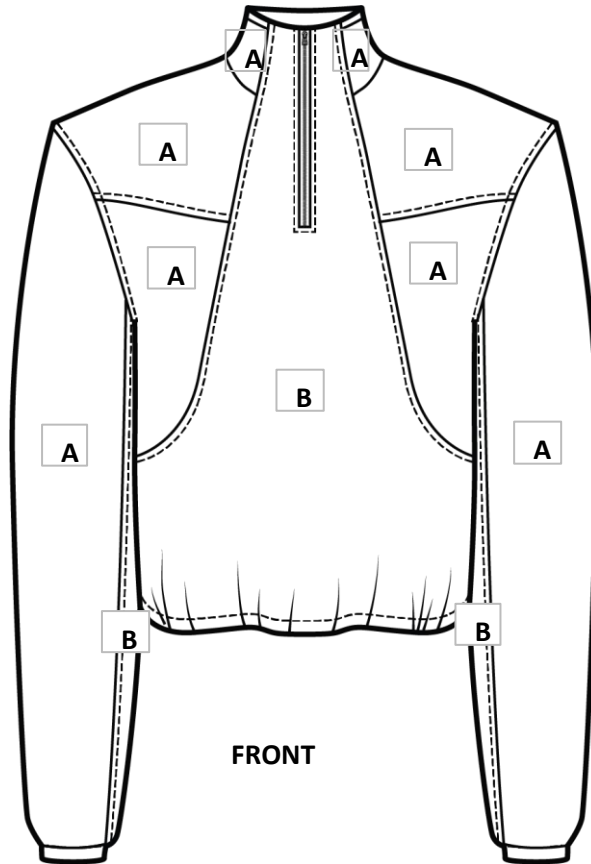
Sample Size: M

Style Name: Roland Fleece

Style Number: 27001S25J1

Generated by: Ryan Moll

FRONT SKETCH TO 1/8" SCALE - STITCH CALL OUTS AND DETAIL SKETCHES



1/4" TS Throughout



**TECHNICAL PACKAGE**

**Style Name:** Roland Fleece

**Size Range:** XS-XL

**Style Number:** 27001S25J1

**Sample Size:** M

**Generated by:** Ryan Moll

**SEAM ALLOWANCES**

3/8"	Throughout Unless Noted
2"	Hem

## TECHNICAL PACKAGE

**Style Name:** Roland Fleece

**Size Range:** XS-XL

**Style Number:** 27001S25J1

**Sample Size:** M

**Generated by:** Ryan Moll

### SEQUENCE OF CONSTRUCTION

#### SHELL

- 1 Join FRT top to FRT mid & TS
- 2 Join BK top to BK mid & TS
- 3 Join SHLDRs & TS
- 4 Join upper SS & TS
- 5 Set zip @ CF NK & TS @ 1/4"
- 6 Set FRT lining to inside of zip
- 7 Join FRT lining to lower BK
- 8 Set SS PKTS & TS
- 9 Join two assemblies along FRT/lower BK seam & TS
- 10 Set INV zip in underarm gusset & line
- 11 Join underarm gusset to under SLV & TS
- 12 Join upper SLV to under SLV & TS
- 13 Join SLVs to body
- 14 Bind NK & Cuffs
- 15 Finish hem w/ 1" twice turned elastic hem

**NOTE:** SNL at 8 stitches per inch used throughout unless otherwise specified  
All OVLK 4 thrd unless otherwise specified  
TS with 1/4" unless otherwise specified