

TECHNICAL PACKAGE

Style Name: Roland Shirt

Size Range: XS-XXL

Style Number: 27001S25T1

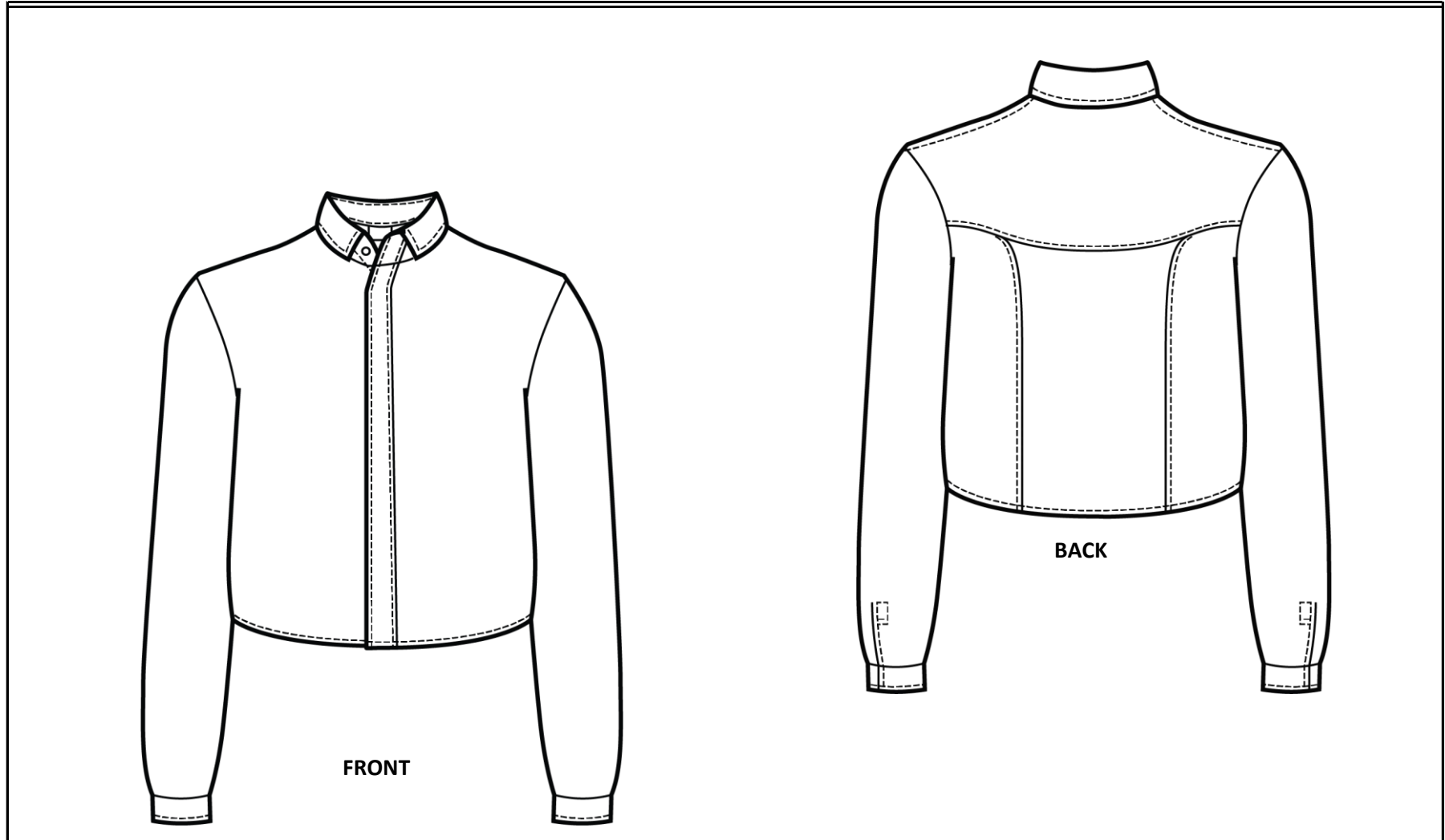
Sample Size: M

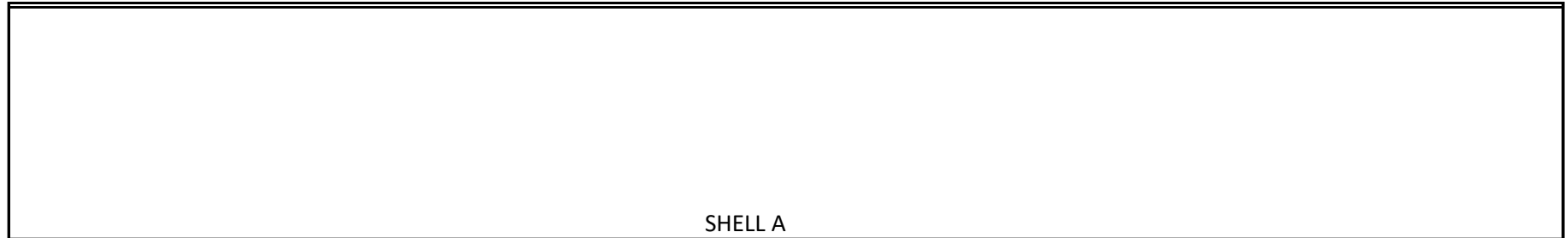
Generated by: Ryan Moll

DESCRIPTION

Unisex's dress shirt with cropped fit. The shirt has a back yoke and piecing and a stand collar. Also has long sleeves, a pieced on placket, and a hidden snap front closure.

SKETCH



TECHNICAL PACKAGE**Style Name:** Roland Shirt**Size Range:** XS-XXL**Style Number:** 27001S25T1**Sample Size:** M**Generated by:** Ryan Moll**BILL OF MATERIALS****FABRIC SWATCHES****FABRIC**

Category	Type	Content	Width	Yardage	Units	Color
Shell A	Stretch Seersucker	100% Polyester	53"	0.94 yds	1	Rust

FINDINGS

Item	Description	Size	Length	Location	Quantity	Color	Total
Threads	Lockstitch	Tex 24		All SN	1 Spool	Orange	1 Spool
	Serger	Tex 27		ALL OVLC	4 Spools	Brown	4 Spools
Snaps	Plastic cap and socket	16mm		CF & Cuff	9	Brown	9
	Plastic post and stud	16mm		CF & Cuff	9	Brown	9
Label	Brand	1.5" x 2"		CB NK	1	White	1
Label	Country of Origin	3" x 0.75"		CB NK	1	White	1
Interfacing	Pellon Squares	1" x 1"		All Snaps	18	White	18

TECHNICAL PACKAGE**Style Name:** Roland Shirt**Size Range:** XS-XXL**Style Number:** 27001S25T1**Sample Size:** M**Generated by:** Ryan Moll**PATTERN PARTS LIST**

Piece #	Description	Fabric	Cut #
1	FRT	Shell A	2
2	BK Mid	Shell A	1
3	BK Side	Shell A	2
4	BK Yoke	Shell A	1
5	SLV	Shell A	2
6	Cuff	Shell A	4
7	FRT PLKT	Shell A	2
8	SLV PLKT	Shell A	2
9	Upper Collar	Shell A	1
10	Under Collar	Shell A	1
11	Collar Stand	Shell A	2

Sub-Total Shell B

20

Total Pieces

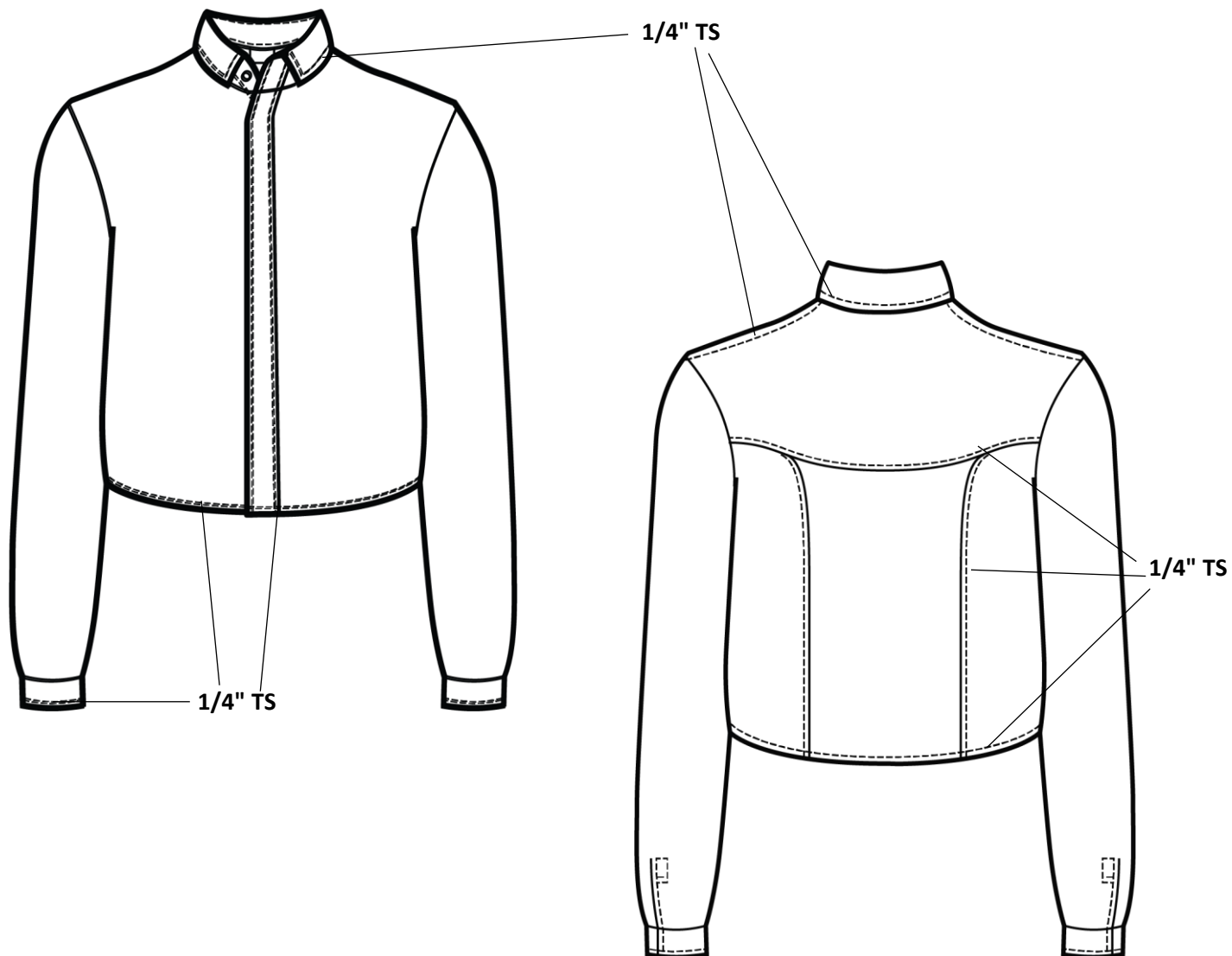
20

Style Name: Roland Shirt
Style Number: 27001S25T1

TECHNICAL PACKAGE
Size Range: XS-XXL
Sample Size: M

Generated by: Ryan Moll

GARMENT SKETCHES TO 1/8" SCALE - STITCH CALL OUTS AND DETAIL SKETCHES



Style Name: Roland Shirt
Style Number: 27001S25T1

Sample Size: M

Generated by: Ryan Moll

MEASUREMENT POINTS

[illegible]

All snaps to be hidden from face side when closed

TECHNICAL PACKAGE**Style Name:** Roland Shirt**Size Range:** XS-XXL**Style Number:** 27001S25T1**Sample Size:** M**Generated by:** Ryan Moll**SEAM ALLOWANCES**

Width	
1/4"	SLV PLKT,
3/8"	Throughout Unless Noted
3/4"	Hem

TECHNICAL PACKAGE

Style Name: Roland Shirt

Size Range: XS-XXL

Style Number: 27001S25T1

Sample Size: M

Generated by: Ryan Moll

SEQUENCE OF CONSTRUCTION

SHELL

- 1 Join BK Sides to BK Mid & TS
- 2 Set Yoke to BK & TS
- 3 Set snaps to RT & LFT PLKT
- 4 Set FRT LFT PLKT w/ 1/4" TS on overlap & ES on underlap
- 5 Set FRT RT PLKT w/ 1" twice turned finish
- 6 Join SHLDR & TS
- 7 Join upper collar to undercollar
- 8 Set snaps to collar stand
- 9 Join outer stand to NK, apply inner stand & ES
- 10 Set PLKT to SLV w/ ES
- 11 Join SLV to ARMHL
- 12 Join underarm & SS & TS
- 13 Set 1/4" twice turned hem w/ ES
- 14 Set snaps to cuffs
- 15 Set cuff to SLV w/ ES

NOTE: SNL at 9 stitches per inch used throughout unless otherwise specified
All OVLK 4 thrd unless otherwise specified